

Qubi

(QB2-AIR-001 only)

Configuration & Installation Guide



Copyright

No part of this publication may be reproduced, transcribed, transmitted, stored in a retrieval system or translated into any language, in any form or by any means mechanical, manual, electronic, magnetic, chemical, optical, including photocopying or otherwise without the prior written permission of QED Advanced Systems Ltd.

Confidentiality

This document is the property of QED Advanced Systems Ltd, and is provided on the understanding that its use will be confined to the officers of your company and that no part of its contents will be disclosed to third parties without the prior written consent of QED Advanced Systems Ltd. This online publication is to be returned to QED Advanced Systems Ltd when it is no longer required for the agreed purpose.

Version History

Document version *Date*

Version 4 September 2015

Acknowledgements

QED Advanced Systems Ltd respectfully acknowledges all trademarks, trade names and other unique identification symbols, whether implied or explicit, used within this document.

QED Advanced Systems Ltd.
Oakwood Business Park
Oldmixon Crescent
Weston-Super-Mare
BS24 9AY
UK

Tel: +44 (0)1934 836960 Email: info@qedas.com
Web: www.ResourceXpress.com

Contents

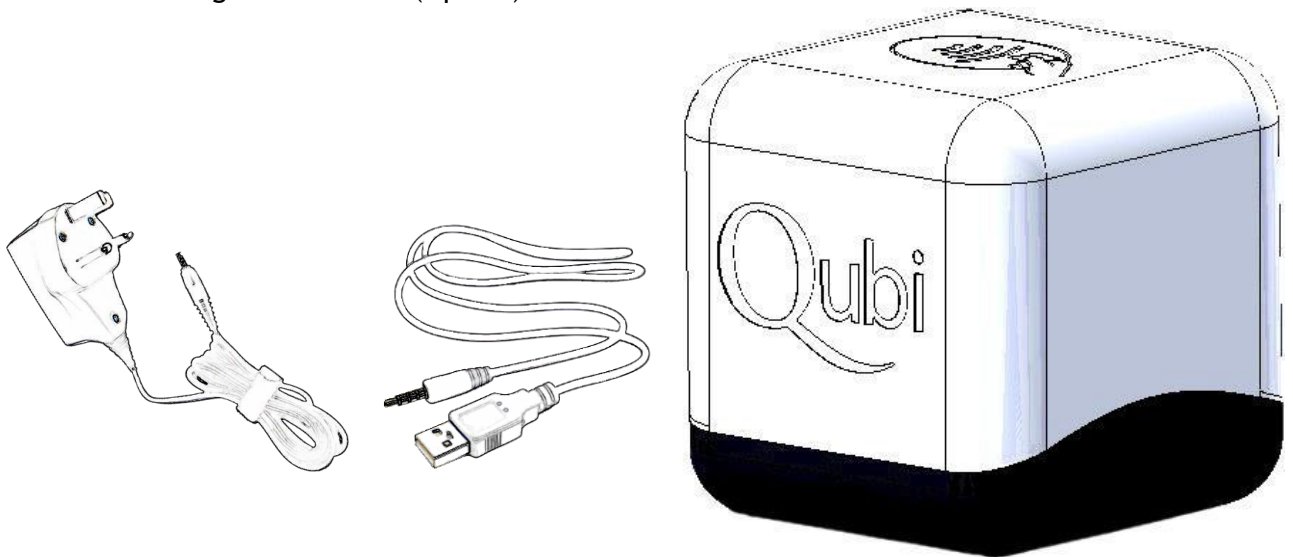
| | |
|---|----|
| Introduction | 4 |
| Installation Procedures | 5 |
| Prerequisites | 5 |
| Installing Qubi Config PC Application | 6 |
| Connecting Qubi for Set Up | 7 |
| Configuration | 8 |
| Power Up Sequence | 9 |
| Assigning a Resource Profile to a Qubi | 9 |
| Appendix A - Resource Profile Settings Affecting Qubi Operation | 11 |
| Appendix B - System Settings Affecting Qubi Operation | 12 |
| Appendix C - Troubleshooting | 13 |
| Appendix D - Qubi Gateway Setup | 14 |
| Step 1 - Digi Discovery | 14 |
| Step 2 - Network Configuration (LAN or Wi-Fi) | 15 |
| Step 3 - Testing with a Qubi | 15 |
| Appendix E - CE Testing | 16 |

Introduction

This guide covers the installation and configuration of the ResourceXpress Qubi Config PC Application. Connection and configuration of the hardware and assigning a profile for each Device.

Package Contents

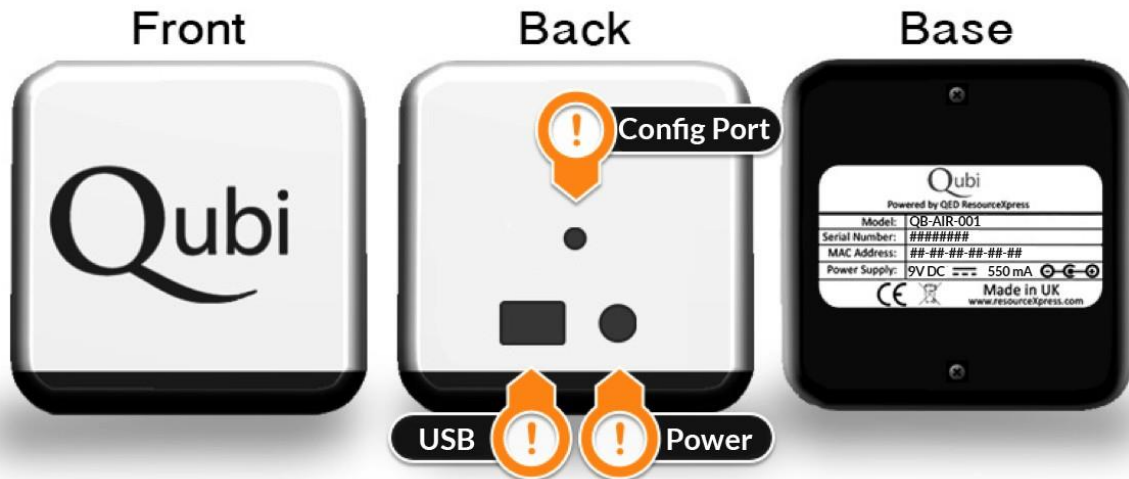
- Qubi Unit (Model QB-AIR-001)
- Mains Power Adaptor (or USB 2.0 A to B cable if powering via USB Port) (Option)
- Configuration Cable (Option)



Installation Procedures

Prerequisites

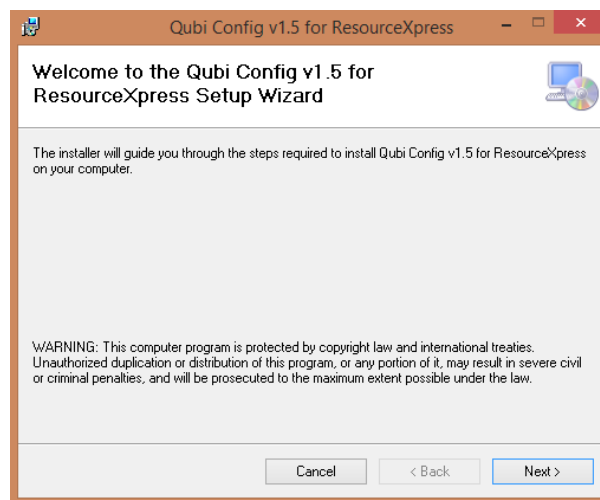
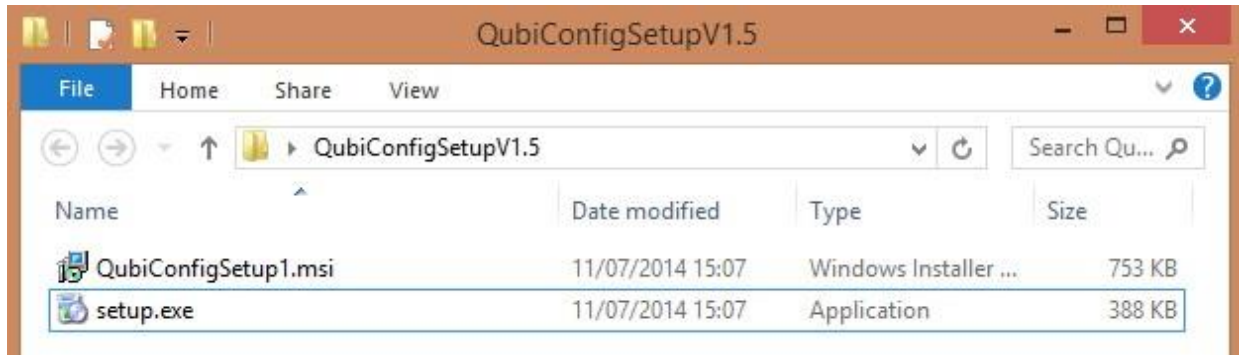
- ResourceXpress Server with light resource license for each Qubi
- Pre-configured Qubi Gateway with Wi-Fi or LAN connection to ResourceXpress server. (one Qubi Gateway per Zone Required - See Appendix 4 for details of gateway set-up)
- Local mains or USB power outlet



Installing Qubi Config PC Application

Download the latest version of the Qubi Config application from the following link:
<http://goo.gl/dLvtF4>

Extract the zipped files and double click **Setup** and follow the on screen instructions through the installation process.



Begin the installation process by selecting **Next**.

Select the installation directory, by default this is set to **Program Files**.

Confirm the Installation by selecting **Next**. The Installer will now run the installation process. NB: this may take a few moments.

Once the installer has finished select **Close** to exit the installer application. The Qubi Config will now be available in **All Programs** from the **Start** menu.

Connecting Qubi for Set Up

Step One

Start Qubi Config

Note: Download drivers if required: <http://www.ftdichip.com/Drivers/VCP.htm>

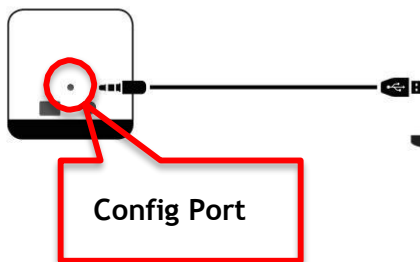


Step Two

Connect the configuration cable to Qubi config port and pc USB port



NB: Ensure the configuration cable is fully inserted into Qubi



Step Three

Click "Restart application"



Step Four

Power on Qubi

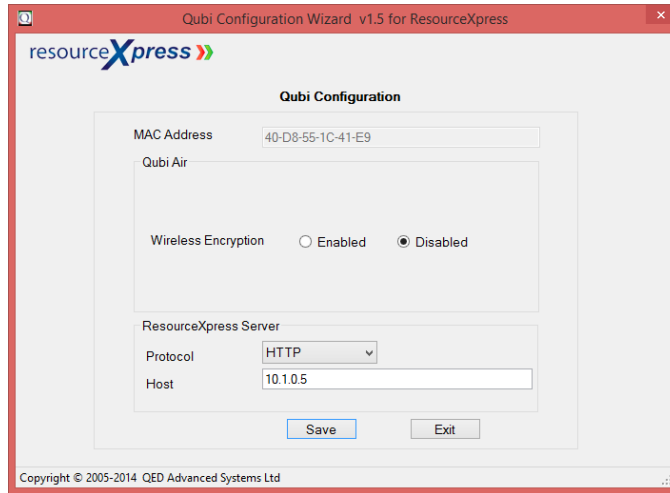


Red & Green lights will show and The Qubi configuration screen will display The current settings

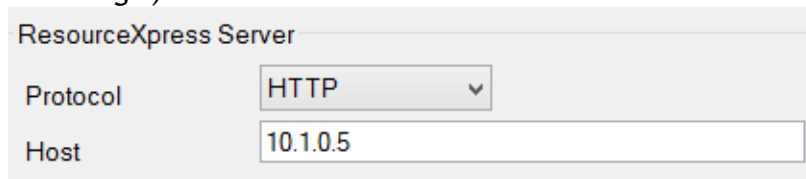


NB: If Qubi is not detected check that the configuration cable is fully inserted, then power off the Qubi and power on again.

Configuration



(Above Image - After a successful connection the MAC address will be displayed as well as the current Qubi settings.)

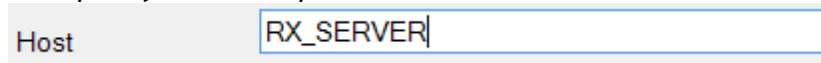


The correct ResourceXpress Server IP address or Host name is required in the ResourceXpress Server field to allow the Qubi to successfully communicate with the ResourceXpress System; select “**Save**” to send any changes to the Qubi. Qubi AIR version also gives the option to choose between HTTP and HTTPS depending on the server requirements.

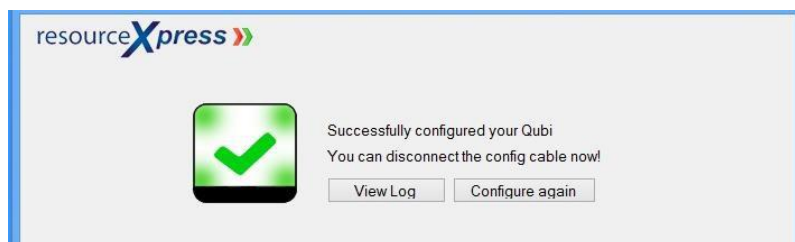
Example of ResourceXpress Server IP address



Example of ResourceXpress Server Host Name



After pressing “Save” a success message should display as shown below



Unplug the configuration cable and power cable from the Qubi, the device can now be powered on again. NB: Wireless Encryption should be disabled as this is currently a future feature.

Power Up Sequence



1
Awaiting
configuration



2
Qubi Mesh
network
joined



3
Connection to
Qubi gateway
successful



4
Server found

Assigning a Resource Profile to a Qubi

After Qubi has been configured to connect to the ResourceXpress Server it must be assigned to a resource profile.

Firstly a valid Qubi Profile must be created, this is similar to a standard profile however the Qubi check box must be ticked.

From the Admin Interface navigate to *Unregistered Qubi Devices*.

This will display a list of all the Qubi's that are connected to this server, which have not yet been allocated a profile.

Pressing the *Qubi* button found on the right side will bring up a list of the available profiles that the Qubi can be assigned.





| ID | Time Stamp | URL Accessed | MAC | Action |
|--------|---------------------|---|-------------------|--------|
| 165355 | 03/09/2015 15:37:00 | http://10.1.0.236/meetingmonitor/d/rs.aspx?m=40-D8-55-1C-40-39&d=2&tp=1 | 40-D8-55-1C-40-39 | |

Select the checkbox for the appropriate resource, and confirm.

| | Country | City | Site | Building | Floor | Zone | ID | Resource Display Name |
|-----------------------|---------|-------------------|--------|-----------------------|-------------|--------|----|-----------------------|
| <input type="radio"/> | UK | Weston-super-Mare | QED UK | Oakwood Business Park | First Floor | Zone 3 | 6 | Desk 001 |
| <input type="radio"/> | UK | Weston-super-Mare | QED UK | Oakwood Business Park | First Floor | Zone 3 | 7 | Desk 002 |

Select Cancel

The Qubi will now connect to this profile within 60 seconds and update the LED's to Green, Red or Amber according to the status of the configured resource.

| | | | |
|---|---|--|---|
|  |  |  |  |
| Green -Free | Red - Busy | Red Fading - Session Ending Shortly | Amber - Waiting for Check-in |

If Qubi status remains all blue check the MAC address has been entered correctly. See troubleshooting guide in Appendix C for more information

Removing a Qubi from a Resource Profile

From the *Resource Displays* page of the ResourceXpress Server select *Edit* for the appropriate resource; then the last section is *Qubi Settings*.

Qubi Settings

MAC Address

In this section remove the MAC address of the Qubi. Save these changes, the Qubi will no longer be associated with this profile, with 60 seconds the Qubi will appear in the 'Unregistered Qubi Devices' list.

Appendix A - Resource Profile Settings Affecting Qubi Operation

Resource Type should be “Light Resource” and Prefix “Qubi” as below:

Resource Type

Room

Light Resource (e.g. Desks, Parking Spaces, Qubi)

Prefix :

The duration for a Qubi booking is set in the Touch Screen Setting section of the Resource Profile, the “Maximum duration of individual booking”.

Touch Screen Settings

Interactive Yes No

Maximum duration of individual booking Minutes
(Note: Enter 0 for unlimited duration.)

When a booking is made using a Qubi the duration will be set to 60 minutes (default). If the booking is extended the extension time is also this setting; if another booking is scheduled within this time frame the booking will only extend to the maximum available time. Any settings that have been set for **Check In**, **Check Out** and **Extend** will be honoured by the Qubi, for instance if **Authenticated by Organiser only** is enabled for all three options, only the Organisers RFID card will work with the Qubi.

Check In

Auto Cancellation On Off Use System Settings

Display Check In Button Yes No Use System Settings

Confirm time before start Minutes

Confirm time after start Minutes

'Check In' Authenticated ?

Yes - by Organiser only

Yes - by Organiser and Attendees only

Yes - by any authenticated user

No

Use System Settings

If any authentication is set to “No” any RFID card can be used to Book, Check In, Check out or extend a session. Any bookings created with authentication off will show as booked by the “Smartbooking User name” (this is set under the Display tab in System Settings). The UID of the card used will also be recorded in the system’s booking report.

Appendix B - System Settings Affecting Qubi Operation

Under system settings navigate to the Qubi tab.

| | | | | | | | | | |
|------------------------|---|---|-----------|---------|----------------------------|-------------------------|----------------|--------|------|
| Resource Server | Display | Interactive | Messaging | Licence | Screen User Authentication | Light Resource Settings | Email Settings | Alerts | Qubi |
| Auto Checkout Enabled | <input checked="" type="radio"/> Yes <input type="radio"/> No | | | | | | | | |
| Auto Checkout Trigger | 5 | Minutes of inactivity | | | | | | | |
| Temp Checkout Duration | 30 | Minutes | | | | | | | |
| LED Brightness | 9 | (1 = low and 9 = high - Note: 0 = Low power sleep mode) | | | | | | | |
| Device Audio | <input checked="" type="radio"/> On <input type="radio"/> Off | | | | | | | | |

Auto Checkout

This setting determines if sessions will be checked out if a valid RFID card is not present. The Qubi will fade to warn of an Auto checkout.

Auto Checkout Trigger - (only applicable if Auto Checkout is “Yes”)

This setting determines the amount of time given before an Auto checkout takes place; default is 5 minutes.

Temp Checkout Duration

This setting determines the temporary checkout time, once the Qubi has been tilted and card removed it will turn Amber, this will reserve the current booking for the set time; Auto Checkout will take place after this set time if a valid card is not used to Check back in; default is 0 minutes (feature disabled).

LED Brightness

This allows the brightness of the LED lights in the Qubi to be adjusted to suit the surrounding work environment; default is full brightness - 9.

Device Audio

The Qubi can be set to give audible feedback to all functions using an assortment of tones; these can be used for instance to indicate a successful or unsuccessful booking; default is “On”.



Note - Qubi Lite Only: Auto Checkout must be disabled. The Qubi Lite model does not have an RFID reader, if Auto Checkout is enabled any sessions will automatically be terminated.

Qubi and Working Day

If “Enable Energy-Saving Mode for Screens” is set to “Yes” the Qubi will also follow the working hours set in System Settings Display tab. Similar to the room screens the Qubi will turn on AM Start -1 hour and turn off at PM Finish +1 hour.

| Working Day | | |
|--|---|-------|
| AM Start | 07:00 | Hours |
| AM Finish | 13:00 | Hours |
| PM Start | 14:00 | Hours |
| PM Finish | 23:00 | Hours |
| Enable Energy-Saving Mode for Screens ** | <input type="radio"/> Yes <input checked="" type="radio"/> No | |

* = Not applicable to Floor Plan Kiosks

** = This will be enabled 1hr before and 1hr after the working day

Appendix C - Troubleshooting

- 1) Qubi lights stay off after start up



No Mesh network Joined - Check Gateway is powered on

- 2) Bottom lights stay blue after start up



Mesh network joined. No valid response from gateway - Try powering gateway off & on. Then after 5 minutes restart Qubi

- 3) Top lights stay blue after start up



Gateway working ok but no valid response from ResourceXpress sever recheck Qubi ResourceXpress server IP/Domain name using Qubi Config program

- 3) All lights stay blue after start up



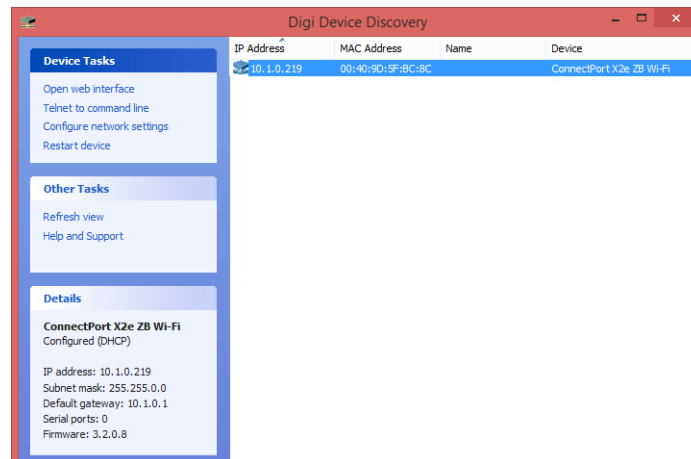
ResourceXpress server response OK but Resource Profile not assigned correctly - Check resource profile has correct Qubi MAC address. From base of Qubi in format A1-B2-C3-D4- E5-F6 also check for leading or trailing spaces and remove if found.

For further support please contact your local ResourceXpress partner or QED at support@qedas.com or +44 (0) 1934 836960.

Appendix D - Qubi Gateway Setup

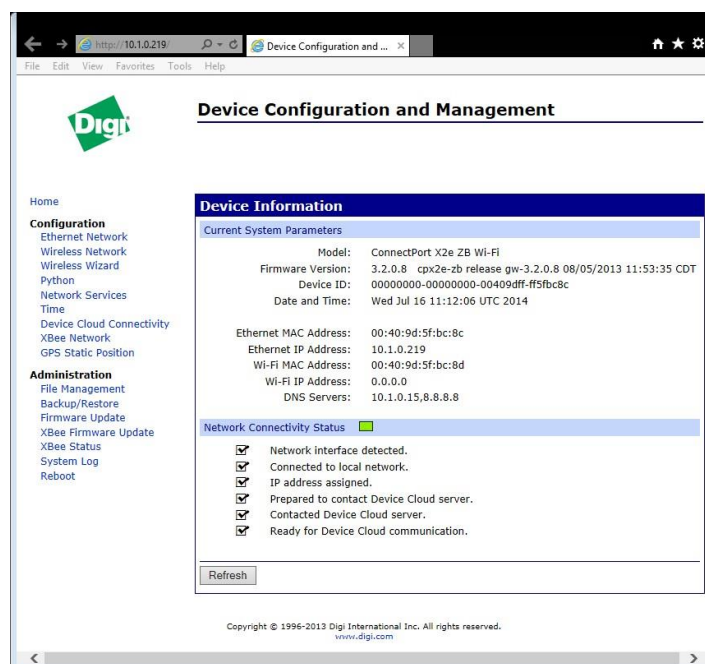
Step 1 - Digi Discovery

- a) Download Digi Discovery from this link
(<http://www.digi.com/support/getasset?fn=40002265&tp=5>)
- b) Install Digi Discovery
- c) Plug your Gateway into your LAN and power up
- d) Run Digi Discovery
- e) Your gateway will appear on the list after a short while.



If your gateway fails to show, please check that they are connected to the same network/vlan as the hub.

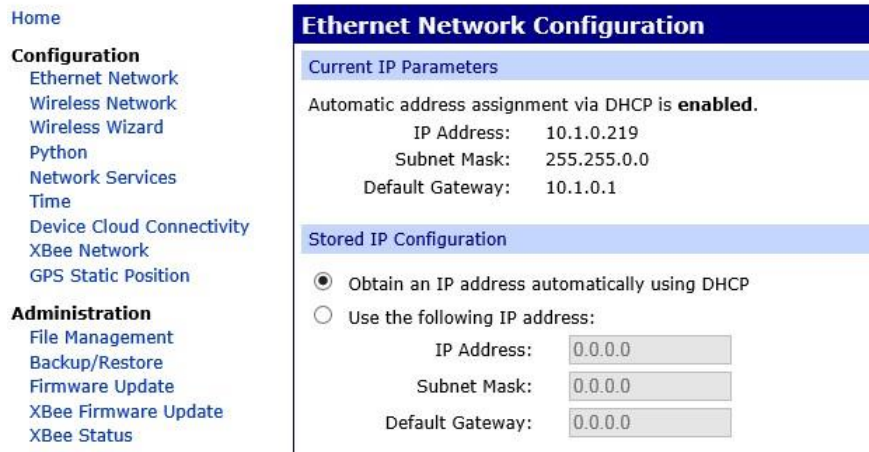
- f) Click on your gateway, then click Open Web Interface on the left side menu



- g) You are now connected to the configuration and management page for your gateway.

Step 2 - Network Configuration (LAN or Wi-Fi)

From the configuration and management page you have 3 ways to configure the way your gateway will connect to your network.



The screenshot displays the 'Ethernet Network Configuration' page. On the left is a navigation menu with sections for 'Home', 'Configuration', and 'Administration'. The 'Configuration' section includes links for Ethernet Network, Wireless Network, Wireless Wizard, Python, Network Services, Time, Device Cloud Connectivity, XBee Network, and GPS Static Position. The 'Administration' section includes File Management, Backup/Restore, Firmware Update, XBee Firmware Update, and XBee Status. The main content area is titled 'Ethernet Network Configuration' and is divided into two sections: 'Current IP Parameters' and 'Stored IP Configuration'. The 'Current IP Parameters' section shows that automatic address assignment via DHCP is enabled, with an IP Address of 10.1.0.219, Subnet Mask of 255.255.0.0, and Default Gateway of 10.1.0.1. The 'Stored IP Configuration' section offers two radio button options: 'Obtain an IP address automatically using DHCP' (which is selected) and 'Use the following IP address:'. The static IP configuration fields show IP Address: 0.0.0.0, Subnet Mask: 0.0.0.0, and Default Gateway: 0.0.0.0.

Ethernet Network, Wireless Network and Wireless Wizard. Ethernet Network and Wireless Network allow you to input your own details. The Wireless Wizard allows for a quick and easy way for your gateway to connect to your Wi-Fi.

NB: Remember to configure your gateway to a network that will have access to your ResourceXpress Server.

Step 3 - Testing with a Qubi

Turn on a fully configured Qubi Air and after a few moments your Qubi will connect via the Gateway to the ResourceXpress server and turn either green or red

Appendix E - CE Testing

Qubi has been tested in accordance with EC DIRECTIVE 2004/108/EC

EN 61000-6-3:2007

EN 61000-6-1:2007

GENERIC EMC IMMUNITY & EMISSION STANDARDS FOR RESIDENTIAL COMMERCIAL AND LIGHT INDUSTRIAL ENVIRONMENTS

The QUBI DEVICE - WORKSPACE MANAGEMENT CUBE has met the performance criteria set by; **BS EN 61000-6-3 for Conducted Emissions**

Radiated Emissions BS EN 61000-6-1 for;

Immunity to Radiated Electromagnetic Fields

Immunity to Fast Transient Bursts - AC Power Ports

Immunity to Fast Transient Bursts - Signal Ports

Immunity to Conducted Field - AC Power Ports

Immunity to Conducted Field - Signal Ports

Immunity to Voltage Surges - AC Power Ports

Immunity to Voltage Dips- AC Power Ports

Immunity to Electrostatic Discharge